

200 Series Gliding Windows  
Table of Basic Unit Sizes Scale 1/8" = 1'-0" (1/8")

Unit Dimension	2'-11 1/2"	3'-11 1/2"	4'-11 1/2"	5'-11 1/2"
Minimum	(902)	(1207)	(1511)	(1816)
Rough Opening	10'-4"	11'-4"	12'-4"	13'-4"
Unobstructed Glass*	(348)	(500)	(652)	(805)

Unit Dimension	2'-11 1/2"	3'-11 1/2"	4'-11 1/2"	5'-11 1/2"
Minimum	(902)	(1207)	(1511)	(1816)
Rough Opening	10'-4"	11'-4"	12'-4"	13'-4"
Unobstructed Glass*	(348)	(500)	(652)	(805)

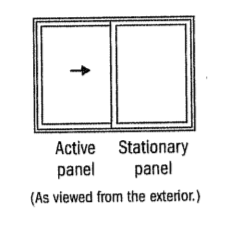
  

Unit Dimension	2'-11 1/2"	3'-11 1/2"	4'-11 1/2"	5'-11 1/2"
Minimum	(902)	(1207)	(1511)	(1816)
Rough Opening	10'-4"	11'-4"	12'-4"	13'-4"
Unobstructed Glass*	(348)	(500)	(652)	(805)

Unit Dimension	2'-11 1/2"	3'-11 1/2"	4'-11 1/2"	5'-11 1/2"
Minimum	(902)	(1207)	(1511)	(1816)
Rough Opening	10'-4"	11'-4"	12'-4"	13'-4"
Unobstructed Glass*	(348)	(500)	(652)	(805)

**Divided Light Patterns**  
In addition to the Colonial grille patterns shown in the table of basic unit sizes, other standard and specialty grille patterns are available. Contact your Andersen supplier for availability.



- \* "Unobstructed Glass" measurement is for single sash only.
- Rough opening dimensions may need to be increased to allow for use of building wraps, flashing, sill panes, brackets, fasteners or other items.
- "Unit Dimension" always refers to outside frame to frame dimension.
- Dimensions in parentheses are in millimeters.
- Picture window narrow jamb width is 3-1/8".
- When ordering, be sure to specify color desired: White or Sandstone.
- \* These units meet or exceed the following dimensions: Clear Operable Area of 5.7 sq. ft., Clear Operable Width of 20" and Clear Operable Height of 24"

Updated 1/08

200 Series Perma-Shield® Gliding Patio Doors  
Table of Basic Unit Sizes Scale 1/8" = 1'-0" (1/8")

Exterior views shown. Arrow indicates direction of panel.

Unit Dimension	4'-11 1/2"	4'-11 1/2"	5'-10 1/2"	5'-10 1/2"
Minimum	(1520)	(1520)	(1791)	(1791)
Rough Opening	24 3/4"	24 3/4"	30 1/4"	30 1/4"
Unobstructed Glass	(629)	(629)	(772)	(772)

Unit Dimension	6'-0"	6'-0"	3'-2 1/2"	8'-0"	8'-0"	4'-2 1/2"
Minimum	(1848)	(1848)	(994)	(2457)	(2457)	(1299)
Rough Opening	31 1/4"	31 1/4"	31 1/4"	43 1/4"	43 1/4"	43 1/4"
Unobstructed Glass	(791)	(791)	(791)	(1095)	(1095)	(1095)

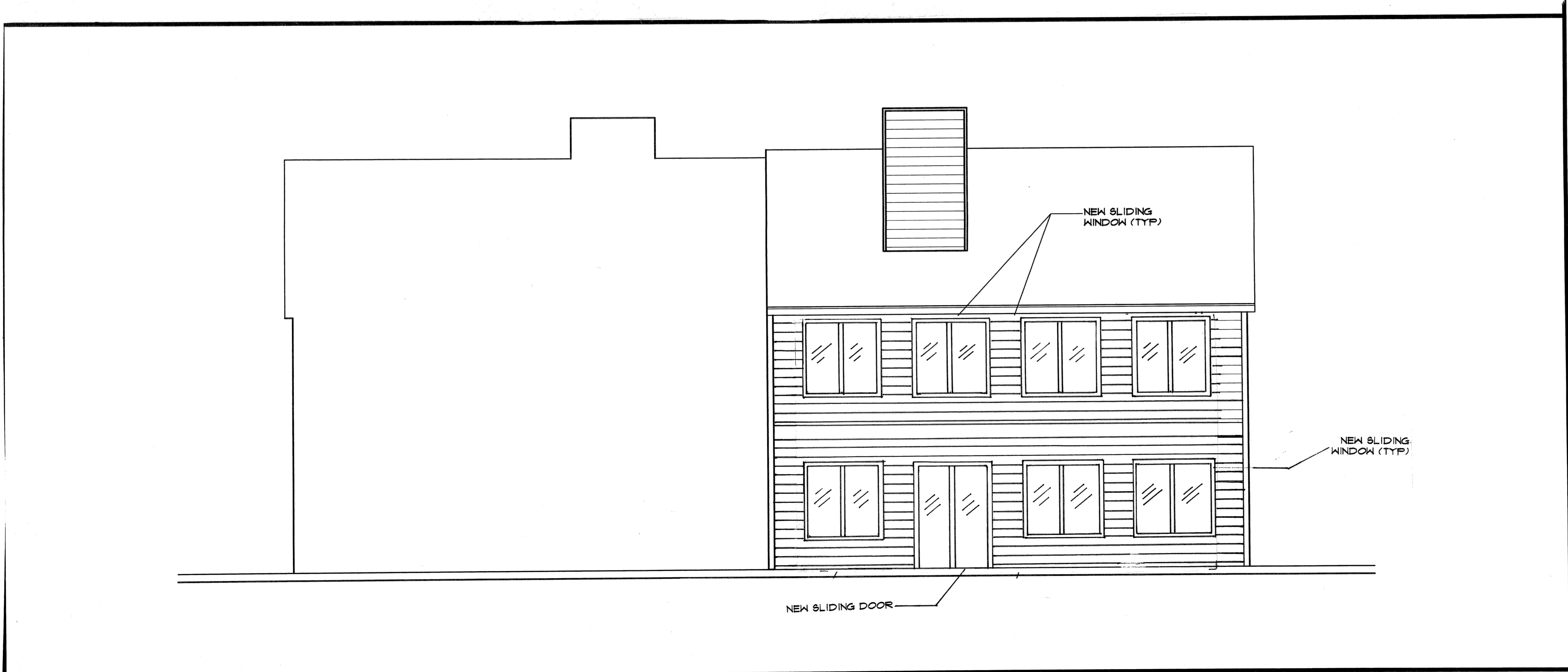
  

Unit Dimension	6'-0"	6'-0"	3'-2 1/2"	8'-0"	8'-0"	4'-2 1/2"
Minimum	(1829)	(1829)	(975)	(2438)	(2438)	(1280)
Rough Opening	31 1/4"	31 1/4"	31 1/4"	43 1/4"	43 1/4"	43 1/4"
Unobstructed Glass	(791)	(791)	(791)	(1095)	(1095)	(1095)

**Divided Light Patterns for Patio Doors**  
In addition to the Colonial grille patterns shown in the table of basic unit sizes, other standard and specialty grille patterns are available. Contact your Andersen supplier for availability.

- \* These units are used to replace picture doors. Rough opening height is 8" for PS0088 and PS51188 sizes. Door operation may be specified as either left- or right-hand as viewed from the outside.
- Rough opening dimensions may need to be increased to allow for use of building wraps, flashing, sill panes, brackets, fasteners or other items.
- "Unit Dimension" always refers to outside frame to frame dimension.
- Dimensions in parentheses are in millimeters.
- "S" designates a stationary unit which can be used as an individual unit or as a sidelight.
- Contributions of door units joined together may require horizontal or vertical reinforcement. This reinforcement should be specified by a professional engineer.
- When ordering, be sure to specify color desired: White, Sandstone or Hazelnut.

Updated 1/08



**Appleby + Laccetti**  
Architects, Inc.  
  
Architecture  
Interiors  
Planning  
  
1800 Peachtree St., NW  
Suite 430  
Atlanta, GA 30309-2512  
Phone: 404.603.9288  
Fax: 404.603.9286

**PRINT RECORD**

NO.	DATE	DESCRIPTION
01	8/30/07	OWNER REVIEW

THIS DRAWING, AS AN INSTRUMENT OF SERVICE, IS THE PROPERTY OF THE ARCHITECT AND SHALL NOT BE REPRODUCED, PUBLISHED, OR USED IN ANY WAY WITHOUT THE EXPRESSED WRITTEN PERMISSION OF THE ARCHITECT.

BACK PORCH REVISIONS  
TO  
**HILLSDALE  
CONDOMINIUMS**  
1 HILLSDALE PARKWAY  
SMYRNA, GA 30080  
COBB COUNTY, GA

SEAL:

DATE  
AUG. 30, 2007

PROJECT NO.  
2007-049

DRAWING TITLE:  
**PROPOSED  
PATIO  
ENCLOSURES**

DRAWING NO.:  
**A-02**

**FOR CONSTRUCTION**